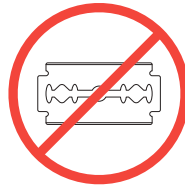


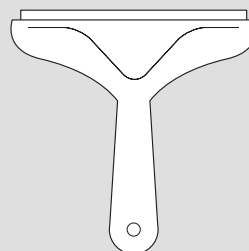
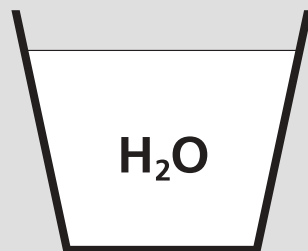
Operating & Cleaning



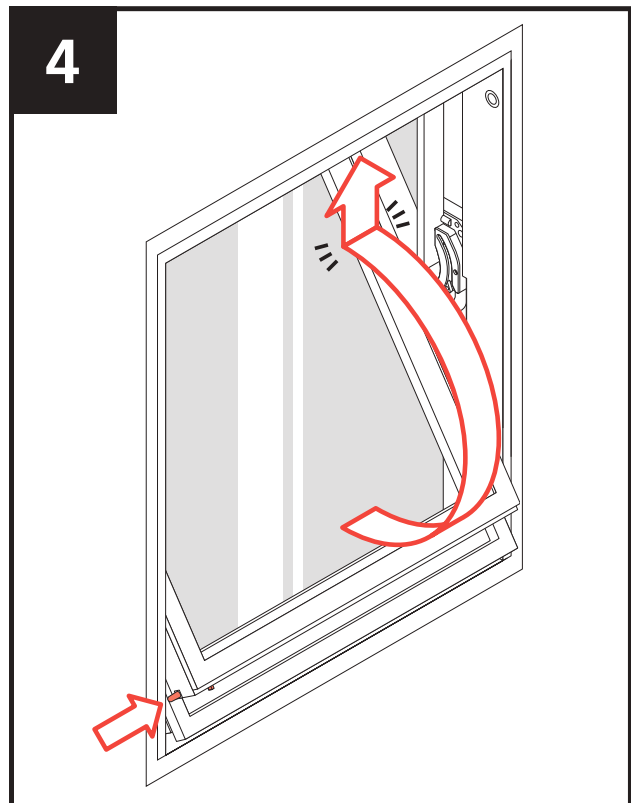
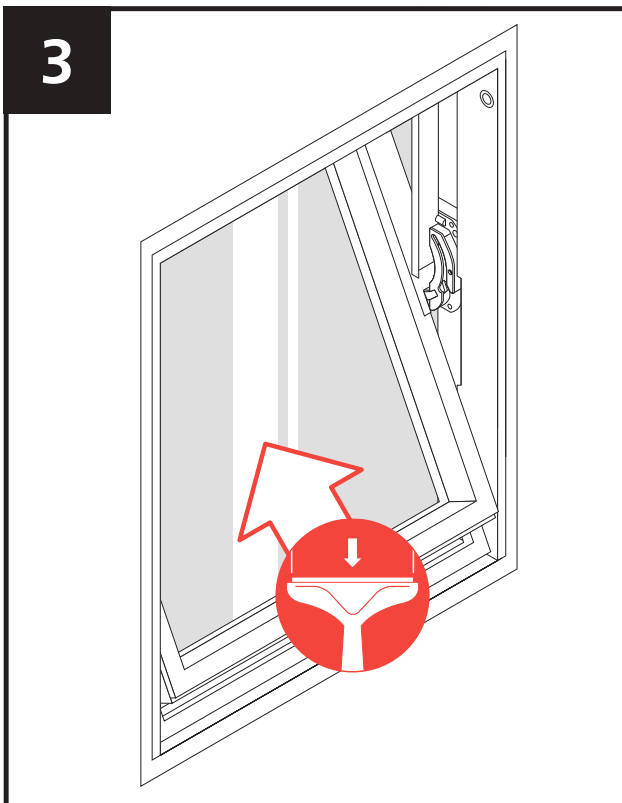
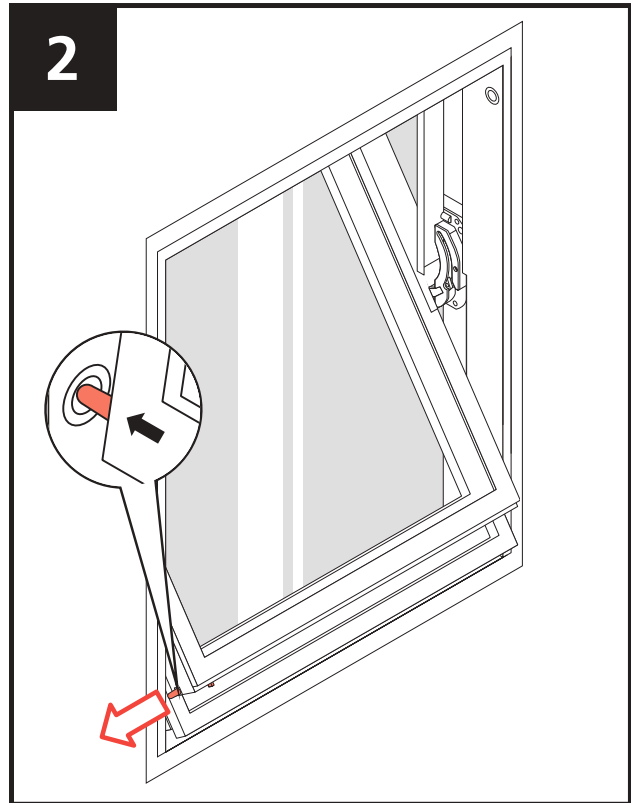
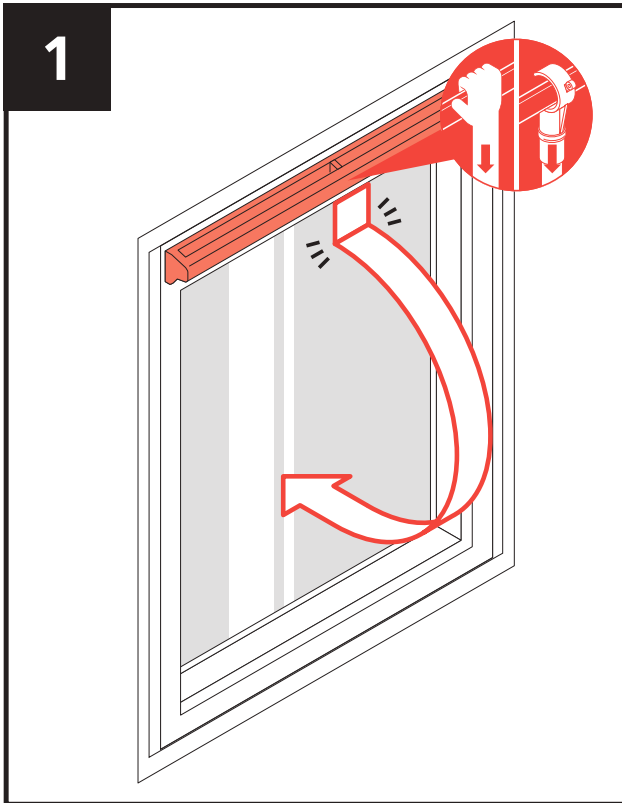
- Avoid using silicone.
- Avoid using cleaning products containing abrasive particles.
- Do not use chemical products.
- Avoid wearing jewellery or sharp objects whilst cleaning.
- To prevent further damage protect the pane with clean plastic until cleaning has finished.



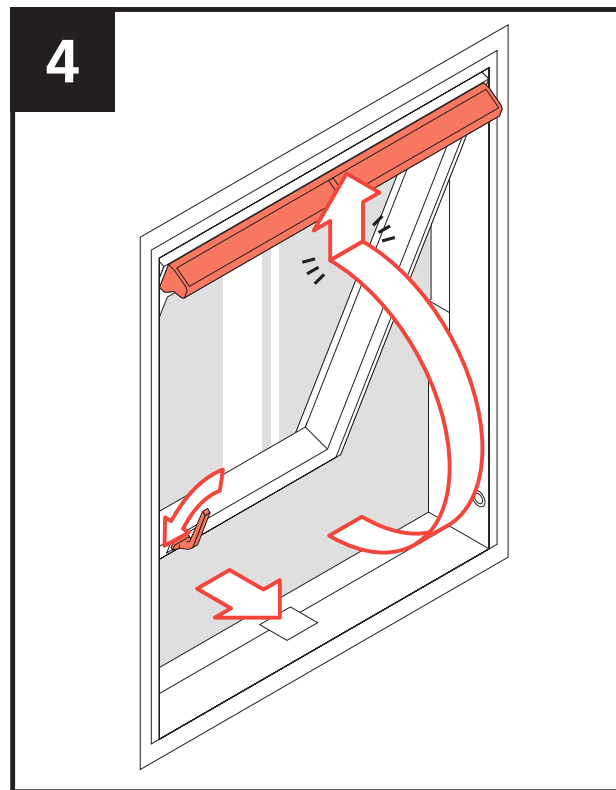
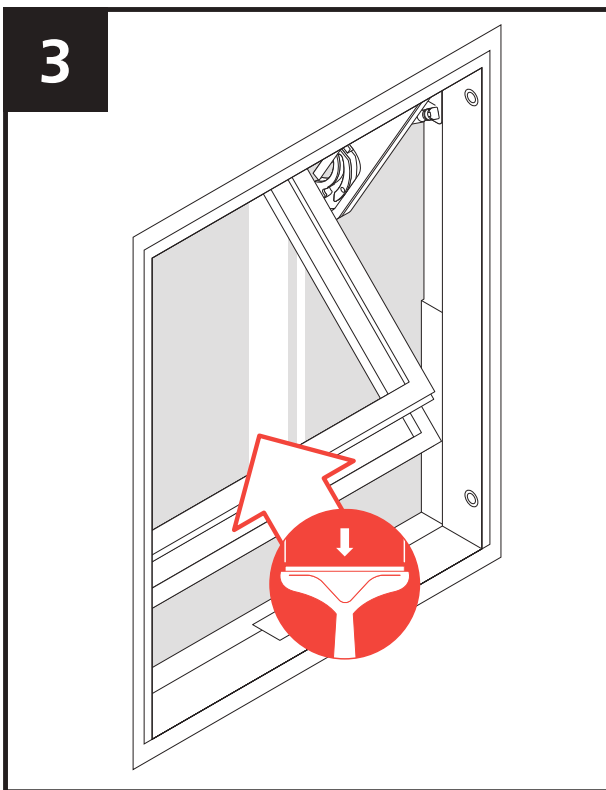
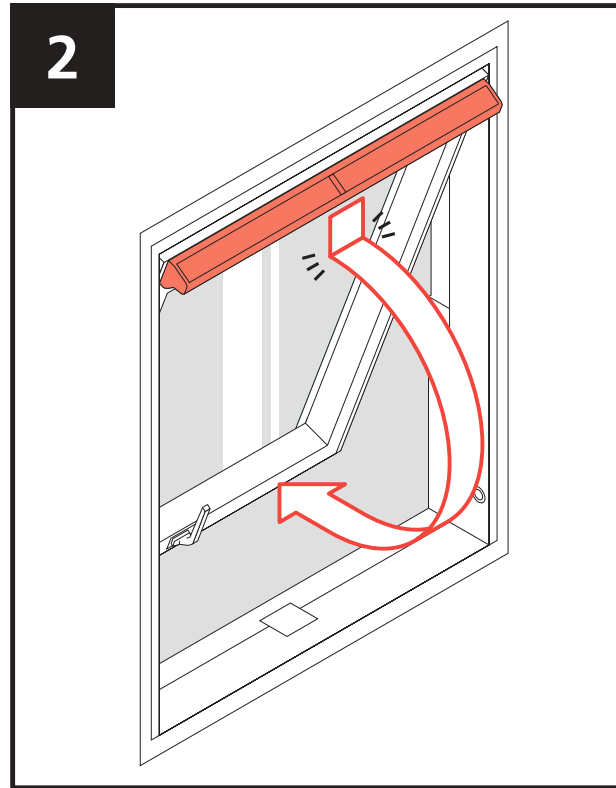
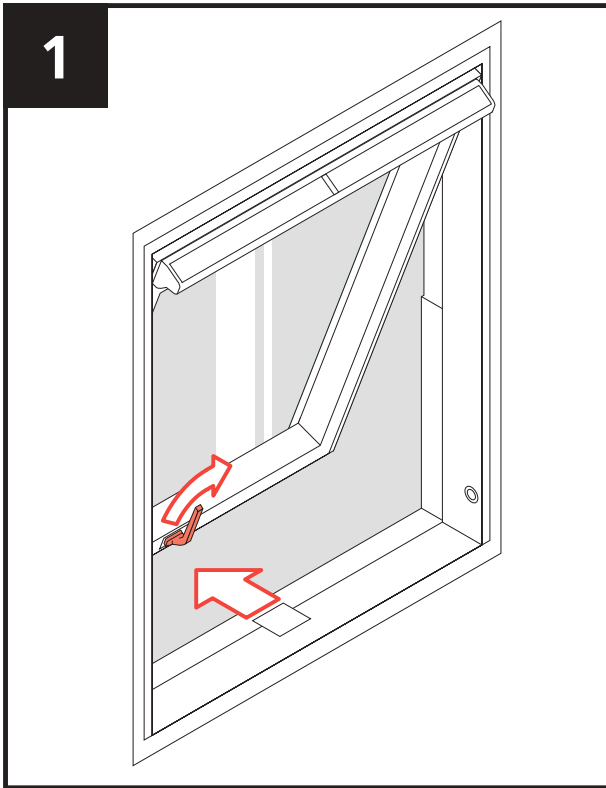
- Clean the pane using a soft, clean cloth/chamois or non-metal squeegee.
- Clean water will be sufficient for cleaning the pane.
- In hard water areas add a small amount of detergent to soften the water or wipe off all excess water after cleaning.



Centre Pivot (CP) Window



Top Hung (TH) Window



UK
Unit 3 Gateway Road, Burton Gateway,
Burton upon Trent, DE13 8FL

NI & ROI
Derryloran Industrial Est. Sandholes Road,
Cookstown, Co. Tyrone, BT80 9LU

T: +44 (0) 1283 200 158
E: info@keyliteuk.com

T: +44 (0) 28 8675 8921
E: info@keylite.co.uk